

The Rednal Rag

REDNAL HILL INFANT SCHOOL
Number 17 – 29th January 2016



Achieve
 Believe
 Create

This is our new school
MOTTO
 We hope that all the children will fulfil all these things whilst at our school.

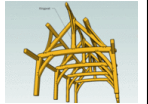
SCHOOL TIMES — doors open 8.45am 3.20pm finish

DATES FOR YOUR DIARY

Tuesday 9th February— School Nurse drop in
 Friday 12th February — Break up for half term
 Monday 22nd February —School opens at 8.45a.m.

BUILDING

We can now see how big this building will be!
 5 classrooms, a learning area, toilets and storage.
 Can you imagine how it will look?



ATTENDANCE LEAGUE TABLE

Class	This week's Attendance	Total lates this week	This week's points	Total Points	
CHESTNUT	99.33%	1	11	37	Well done Chestnut 99.33% this week!
SYCAMORE	96.79%	1	5	36	
HAZEL	97.67%	4	8	35	
OAK	98.00%	0	10 + 1	33	
ELM	98.00%	0	10 + 1	30	
HAWTHORN	97.24%	2	6	29	
PALM	94.14%	1	3	26	
ASH	93.90%	5	2	23	
WILLOW	97.33%	0	7 + 1	20	
NURSERY A.M.	94.58%	1	4	14	
NURSERY P.M.	88.00%	0	1 + 1	8	

ATTENDANCE

Rednal Hill Infant School and Nursery Class is committed to providing the best quality education for each child to achieve his/her full potential. This can only be fully achieved if each child attends school regularly and is punctual. Well done to all those children who achieve over 95% attendance.

If a child is ill or there are other urgent reasons why a child is unable to attend school, the School Office should be informed by telephone by 9.30am on the day of absence.

If the school is not informed of an absence and no acceptable reason is given a text message will be sent to the parent. If no reason for absence or proof of a medical appointment is received the absence will not be authorised.

LATE ARRIVAL AT SCHOOL

When your child arrives late at school she/he misses the teacher's instructions and the introduction to the lesson. Your child may also feel embarrassed at having to enter the classroom late.

PLEASE ENSURE YOUR CHILD IS IN SCHOOL ON TIME EVERY DAY!

MILK

The cost for next half term for milk is £2.88. Please return the reply slip to the milk letter by Friday 4th February to let us know if your child will have water or milk and whether they are entitled to free milk or if you will be paying. No changes can be made during the term.



SCHOOL VALUES

This term the children have been learning about **RESPECT** and understanding the importance of this important value. Ask you child what they have learnt?



SAINSBURYS ACTIVE KIDS 2016

Please collect your Sainsbury's vouchers from the 27th January and donate to school so we can collect equipment for the children. They have a long list of things they would like!



SCHOOL NURSE—Monique Jhass

Will be in school on Tuesday 9th February 9.30a.m.— 11.00a.m. Lots of parents have used this drop in service to answer any questions and receive advice. Please drop in to see her.



NAG ON THE RAG

Please do not park on the yellow zig zags outside the school gates.



HAPPY BIRTHDAY!

Friday 29th January to Thursday 4th February 2016

Dylan in Elm will be 5

Connie in Elm will be 5

Harley in Willow will be 6



www.rednalhill-inf.bham.sch.uk
 Texting Number: 07860030576



@rednalhillinf

